



Comment utiliser et entretenir votre filtre à air AIR FILTER SERVICE INSTRUCTIONS

Votre filtre à air doit être nettoyé entre 7000 kms et 10000 kms. ou tous les 6 mois.

La périodicité de nettoyage est directement liée à l'environnement dans lequel vous circulez.

Procédure de nettoyage des filtres

UTILISER EXCLUSIVEMENT LES PRODUITS D'ENTRETIEN RECOMMANDÉS PAR GREEN

- Déposer le filtre.
- Souffler le filtre, afin d'évacuer le plus gros des impuretés.
ATTENTION- maintenir la "soufflette" à une distance d'environ 15cm.
- Imprégner le filtre de nettoyant GREEN.
- Laisser agir le produit environ 15 minutes.
- Vous pouvez frotter le filtre à l'aide d'un pinceau
- Rincer le filtre à l'eau CHAUDE, par l'intérieur puis par l'extérieur
- Pour les filtres fortement encrassés, n'hésitez pas à renouveler l'opération.
- Secouer le filtre pour évacuer l'eau.
- Il est possible de se servir d'air comprimé pour évacuer l'eau.
- Faites sécher le filtre sur un radiateur tiède, ou à l'aide d'un sèche-cheveux.
- Vaporiser l'huile GREEN sur toute la surface du filtre, uniformément mais sans excès



How to use and maintain your air filter AIR FILTER SERVICE INSTRUCTIONS

It is essential to oil the GREEN filter using the supplied quantity of oil. Clean your air filter between 7000 km and 10000 km or every 6 months.

Cleaning periodicity is linked directly to the environment in which you drive.

Procedure for cleaning the GREEN filters

USE EXCLUSIVELY THE MAINTENANCE PRODUCTS RECOMMENDED BY GREEN

- Remove the filter
- Blow out the filter to expel the largest impurities
CAUTION: maintain the blower at a distance of 15 cm or so.
- Impregnate the filter with GREEN cleaner
- Allow the product to act for about 15 minutes
- You can rub the filter with a paint brush
- Rinse the filter with hot water first on the inside then on the outside
- For deeply fouled filters, be sure to repeat the operation
- Shake the filter to evacuate the water
- Compressed air can be used to evacuate the water
- Dry the filter on a tepid radiator or using a hair dryer
- Spray GREEN oil onto the entire surface of the filter, uniformly but not excessively

NOMENCLATURE

Article	Référence	Q
FILTRE FILTER	TW 70	1
CANALISATION FLEXIBLE PIPE	DP1A7B	1
CANALISATION FLEXIBLE PIPE	DUR0107	1
MANCHON SLEEVE	M5D60	1
MANCHON SLEEVE	M5D70	1
RACCORD CONNECTOR	JDD12	1
GAINÉ SHEATH	G80TW/400	1
VIS SCREW	VTH8.20	2
RONDELLE WASHER	RP 08	4
ECROU NUT	ECN08	2
PATTE BRACKET	FIX 1	1
COLLIER CLAMP	CL 11420	1
COLLIER CLAMP	70/90	4
COLLIER CLAMP	50/70	3
COLLIER CLAMP	12/20	1



Como utilizar y cuidar su filtro para aire AIR FILTER SERVICE INSTRUCTIONS

Su filtro para aire debe ser limpiado entre los 7000 km y los 10.000 km o cada seis meses.

La periodicidad de limpieza es directamente ligada con el medio ambiente en el que circula usted.

Proceso de limpieza de los filtros

UTILIZAR EXCLUSIVAMENTE LOS PRODUCTOS DE LIMPIEZA RECOMENDADOS POR GREEN

- Depositar el filtro.
- Soplar el filtro a fin de despejar el máximo de impurezas.
CUIDADO: mantener el sople a una distancia de unos 15 cm.
- Imprimir el filtro con el producto para la limpieza Green.
- Dejar el producto actuar unos 15 minutos.
- Puede usted frotar el filtro con un pincel.
- Enjuagar el filtro con agua caliente, por el interior y luego por el exterior.
- Para los filtros muy ensuciados, no vacile en repetir la operación.
- Sacudir el filtro para quitar el agua.
- Es posible utilizar aire comprimido para quitar el agua.
- Seque usted el filtro en un radiador tibio o utilice un secador.
- Vaporizar el aceite Green en toda la superficie del filtro uniformemente pero sin exeso.





KIT ADMISSION DYNAMIQUE DYNAMIC INTAKE KIT

PEUGEOT 306 XSI avec ABS

S.A.S
Chrono'Sport
122 rue du faubourg Saint Jean
ZA de l'AVELON - 60000 BEAUVAIS -
FRANCE

03.44.02.64.64

03.44.02.87.10

PART N° :DW 005

FITTING INSTRUCTIONS

Depose the flexible pipe A and the flexible pipe B.(scheme A)

Depose the accelerator order lug to cut it. BE CAREFUL there are 2 models of riser on this vehicle : one in smooth aluminium and one in soldered mechanic metal.(see scheme C)

Raise the accelerator cable lug when cut, and turn the two right injectors of a quarter of four clock wise, that to avoid the contact of the injector's connector against the dynamic intake kit.

Fit together the pipe A of the kit on the throttle box, BE CAREFUL, to position this collar, its tightening's head must be located under the throttle box to avoid all jamming of the accelerator. Then fit together the flexible pipe C on the join of the pipe A of the kit provided.(scheme B)

Fit together and tighten the pipe B of the kit on the aluminium sleeve of the pipe A.(scheme B)

Fit together the filter **TWISTER** on the pipe B of the kit.(scheme B)

Position the **TWISTER** escapade of its lug and make a hole of 08.5mm on the battery's rest.(scheme B)

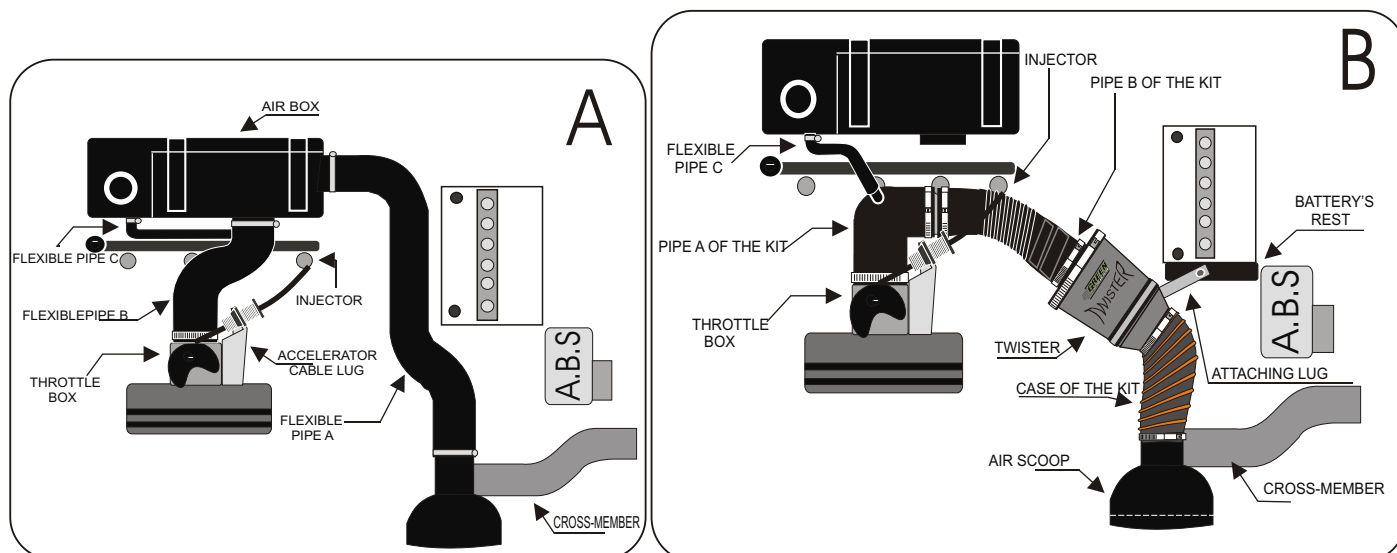
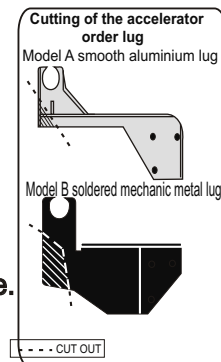
Fix the **TWISTER** with the provided collar.

To stimulate the flow, execute the setting of the **TWISTER** with its case, as represented.

BE CAREFULL:

To have the best performance of your **TWISTER** the filter must imperatively be stimulated with the case.
(scheme C)

Position the **TWISTER** so that it doesn't touch any mechanical organ.



IMPORTANT

The working of your engine, is directly binded by the maintenance of your air filter. Clean your filter regularly (around 7000 kms) only with the cleaning materials recommended by GREEN.

GARANTIE

Our products are warranted against all manufacturing defect.

Our liability wouldn't be involved in the case of a malfunction due to a bad assembly, or bad use.

The direct admission kit is a technical organ, and requires some car mechanical knowledge.

In the doubt, don't hesitate to entrust the setting of your kit to a professional's care.