



KIT ADMISSION DIRECTE DIRECT INDUCTION KIT

OPEL MANTA GSI

S.A.S.
Chrono'Sport
122 rue du faubourg Saint Jean
ZA de l'AVELON - 60000 BEAUVAIS -
FRANCE
00.33.3.44.02.64.64
00.33.3.44.02.87.10

Part n° :P43

FITTING INSTRUCTION

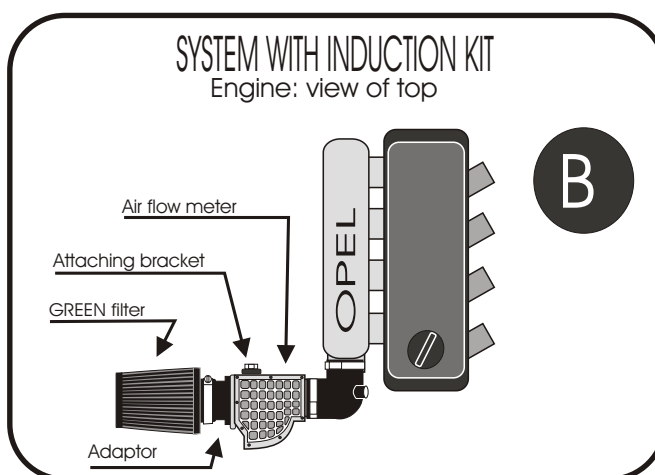
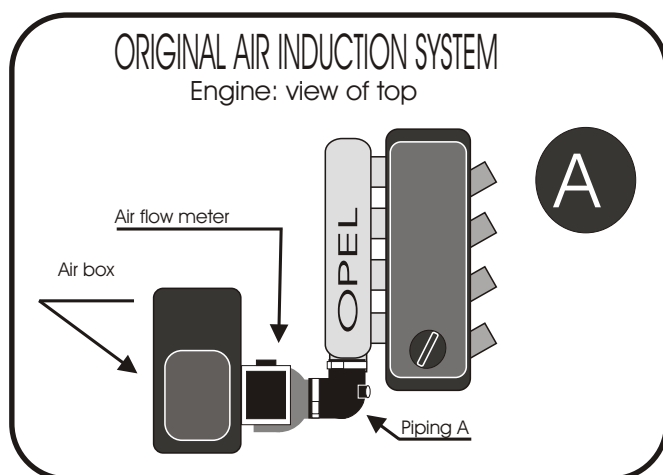
Remove the air box from the air flow meter and reposition the air flow meter (see diagram A and B).

Connect the adaptor to the Green filter and to the hard hose and to the air flow meter.

Screw the attaching bracket on the air flow meter (see diagram B).

ATTENTION: The air flow meter must be attached to the plastic sheet facing downwards.

The attaching bracket must be fitted to the lower fixing points of the old air box.



IMPORTANT:

The running of your engine is linked directly with the maintenance of the air filter. Clean your air filter every 7000 kms or 4500 miles with Green cleaning products..

WARRANTY:

The air filter guarantee is for defects in materials and workmanship only. Guarantee is void if the air filter is damaged by an accident, unreasonable use, neglect, misuse, abuse, improper installation or other causes not arising out of defects in materials and workmanship. The induction kit is a technical product so it is necessary to have some basic mechanical skills. If problems do not hesitate to have your induction kit fitted by a professional.