




## KIT ADMISSION DIRECTE DIRECT INDUCTION KIT

NISSAN 300 ZX 3.0L BI TURBO

S.A.R.L

**Chrono'Sport**

122 rue du faubourg Saint Jean  
ZA de l'AVELON - 60000 BEAUVAIS -  
FRANCE

 00.33.3.44.02.64.64

 00.33.3.44.02.87.10

**Part n° :P287**

# FITTING INSTRUCTION

Remove the complete air box.

Disconnect the air flow meter from the air box

Cut the plastic carter to allow the way of the filter.(see diagram B)

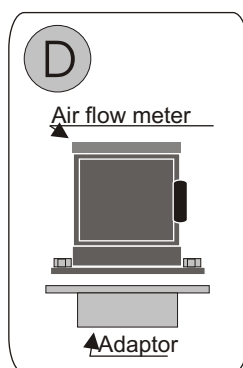
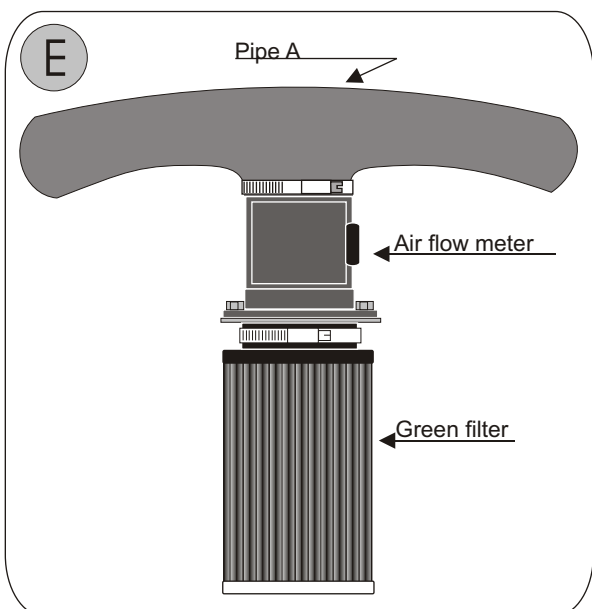
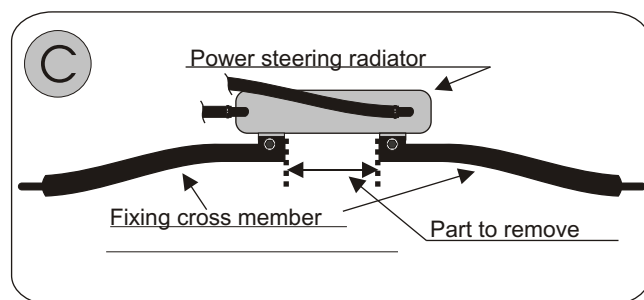
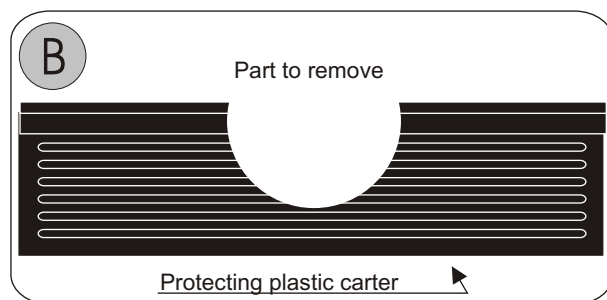
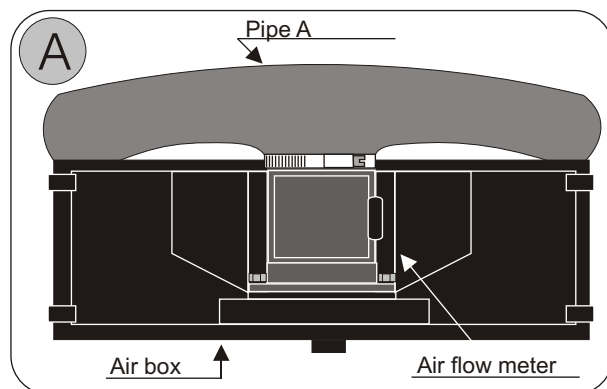
Cut the cross member fixing of the power steering radiator as in diagram C.

Screw the adaptor provided on the air flow meter. (See diagram D)

Adjust the pipe A towards the lower part of the car to place the filter correctly.

Fix the air flow meter with the filter onto the pipe A.  
(See diagram E)

Adjust the filter so that it does not touch a mechanical part



### IMPORTANT:

The running of your engine is linked directly with the maintenance of the air filter. Clean your air filter every 7000 kms or 4500 miles with Green cleaning products.

### WARRANTY:

The air filter guarantee is for defects in materials and workmanship only. Guarantee is void if the air filter is damaged by an accident, unreasonable use, neglect, misuse, abuse, improper installation or other causes not arising out of defects in materials and workmanship. The induction kit is a technical product so it is necessary to have some basic mechanical skills. If problems do not hesitate to have your induction kit fitted by a professional.

Green Technical dept : TEL: 00.33.3.44.02.64.64